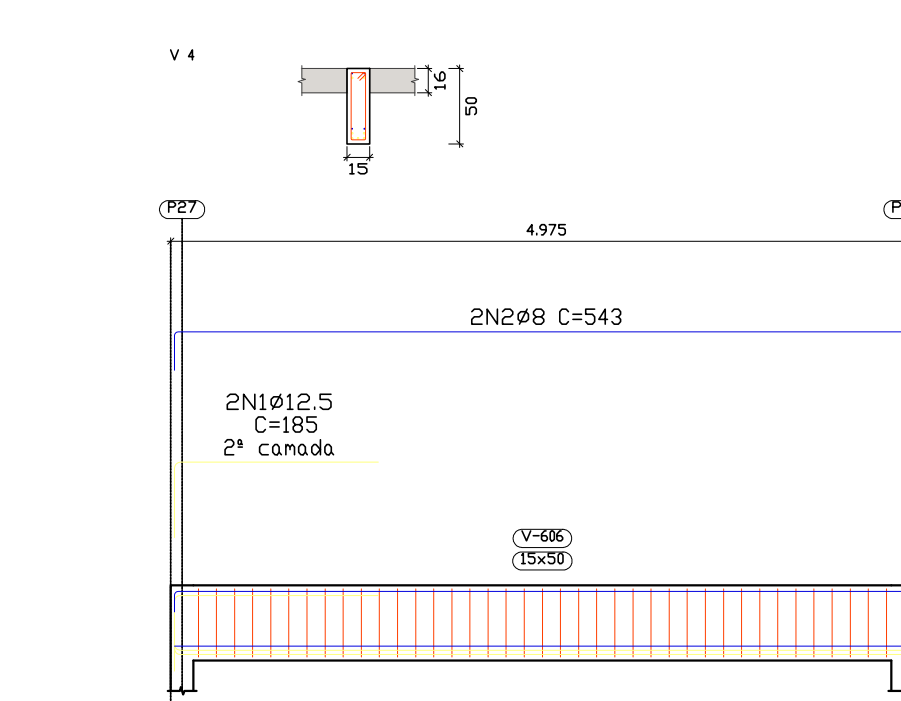
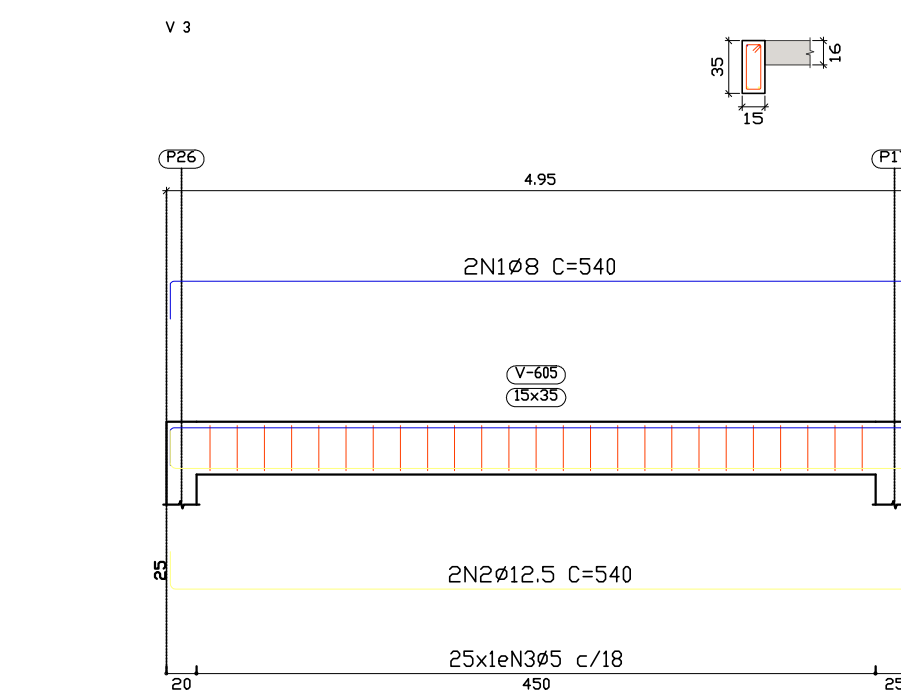
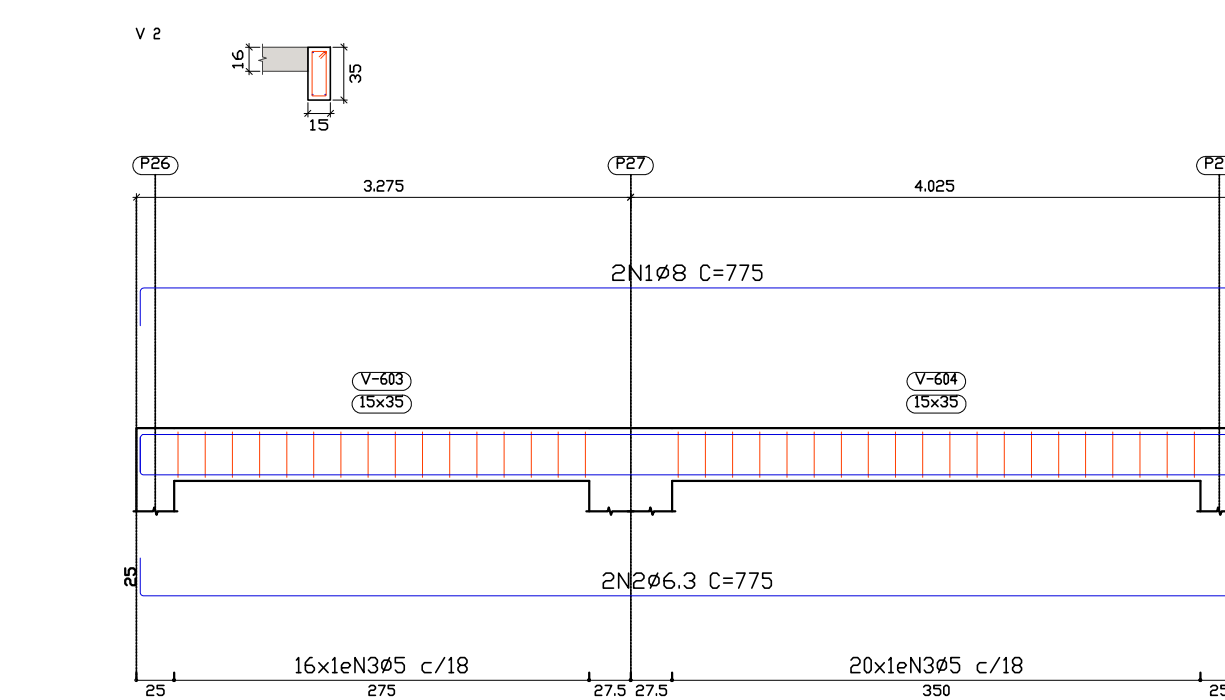
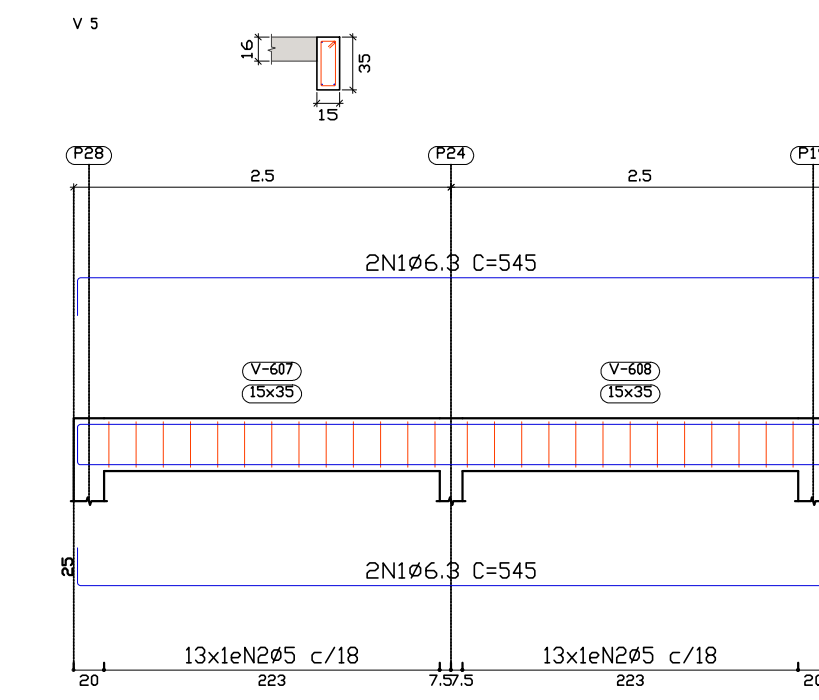
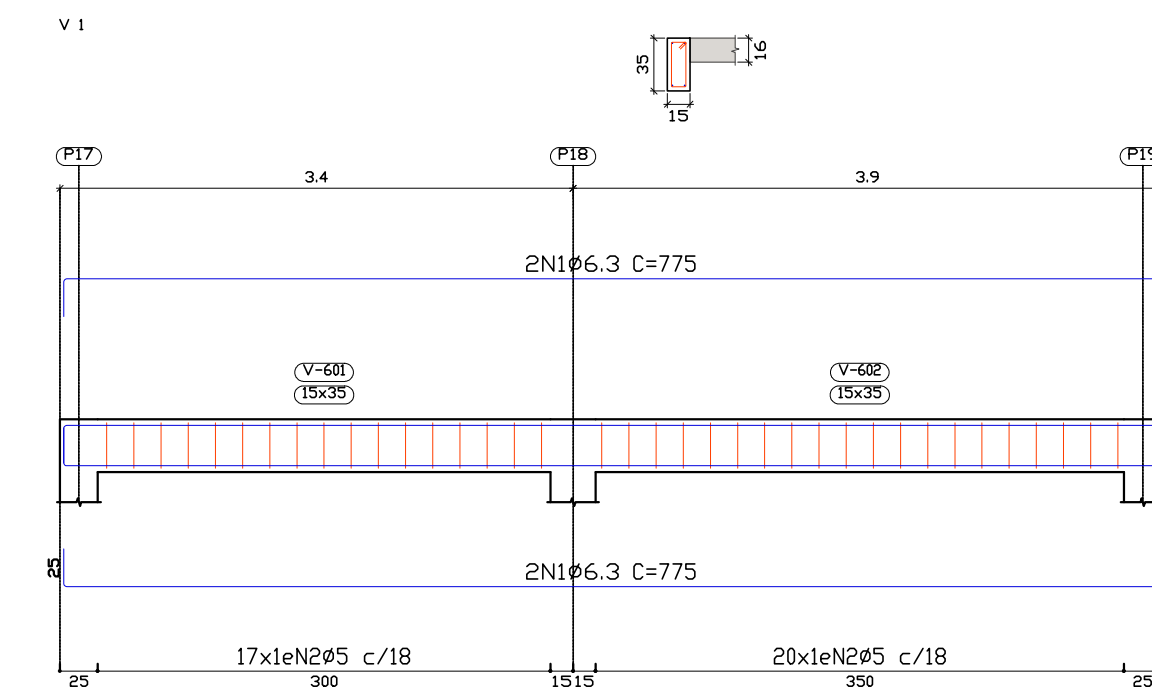


Elemento	Pos	Diam.	Q.	Esquema (cm)	Comp (cm)	Total (cm)	CA-50 (kg)	CA-60 (kg)
V 1	1	Ø12.5	2	775	1550	1550	15.0	
	2	Ø6.3	2	775	1550	1550	3.8	
	3	Ø10	2	275	550	550	3.4	
	4	Ø5	44	88	3872	3872		6.1
					Totais	1025	24.4	6.7
V 2	1	Ø12.5	2	775	1550	14.9		
	2	Ø8	2	775	1550	6.1		
	3	Ø6.3	2	255	510	1.2		
	4	Ø5	43	88	3784	5.9		
					Totais	1025	24.4	6.5
V 3	1	Ø12.5	2	553	1106	10.7		
	2	Ø12.5	2	620	1240	11.9		
	3	Ø12.5	2	540	1080	10.4		
	4	Ø12.5	2	490	980	9.4		
	5	Ø5	45	98	4410	6.9		
					Totais	1025	46.6	7.6
V 4	1	Ø6.3	2	200	400	1.0		
	2	Ø8	4	543	2172	8.6		
	3	Ø5	25	88	2200	3.5		
					Totais	1025	10.6	3.9
V 5	1	Ø6.3	4	545	2180	5.3		
	2	Ø5	24	88	2112	3.3		
					Totais	1025	5.8	3.6
					Ø5	0.0	28.3	
					Ø6.3	12.4	0.0	
					Ø8	16.2	0.0	
					Ø10	3.7	0.0	
					Ø12.5	79.5	0.0	
					Total	111.8	28.3	

L. Casa de Máquinas  
 Desenho de vigas  
 Concreto C20, em geral  
 Aço das barras: CA-50 e CA-60  
 Aço dos estribos: CA-50 e CA-60  
 Escala vigas 1/50  
 Escala seções 1/50  
 Escala aberturas 1/50

Resumo Aço	Comp. total (m)	Peso+10% (kg)	Total
CA-50	Ø6.3	46.4	13
	Ø8	37.2	16
	Ø10	5.5	4
	Ø12.5	75.1	80
CA-60	Ø5	163.8	28
Total			141



Elemento	Pos	Diam.	Q.	Esquema (cm)	Comp (cm)	Total (cm)	CA-50 (kg)	CA-60 (kg)
V 1	1	Ø6.3	4	775	3100	7.6		
	2	Ø5	37	88	3256	5.1		
					Totais	1025	6.4	5.6
V 2	1	Ø8	2	775	1550	6.1		
	2	Ø6.3	2	775	1550	3.8		
	3	Ø5	36	88	3168	5.0		
					Totais	1025	10.9	5.5
V 3	1	Ø8	2	540	1080	4.3		
	2	Ø12.5	2	540	1080	10.4		
	3	Ø5	25	88	2200	3.5		
					Totais	1025	16.2	3.9
V 4	1	Ø12.5	2	185	370	3.6		
	2	Ø8	2	543	1086	4.3		
	3	Ø12.5	5	543	2715	26.2		
	4	Ø8	2	492	984	3.9		
	5	Ø5	39	118	4602	7.2		
					Totais	1025	41.8	7.9
V 5	1	Ø6.3	4	545	2180	5.3		
	2	Ø5	26	88	2288	3.6		
					Totais	1025	5.8	4.0
					Ø5	0.0	26.9	
					Ø6.3	18.4	0.0	
					Ø8	25.4	0.0	
					Ø12.5	44.3	0.0	
					Total	93.1	26.9	

Resumo Aço	Comp. total (m)	Peso+10% (kg)	Total
CA-50	Ø6.3	68.3	18
	Ø8	47.0	20
	Ø12.5	41.7	44
CA-60	Ø5	155.1	27
Total			109

Cobertura casa das máquinas  
 Desenho de vigas  
 Concreto C20, em geral  
 Aço das barras: CA-50 e CA-60  
 Aço dos estribos: CA-50 e CA-60  
 Escala vigas 1/50  
 Escala seções 1/50  
 Escala aberturas 1/50