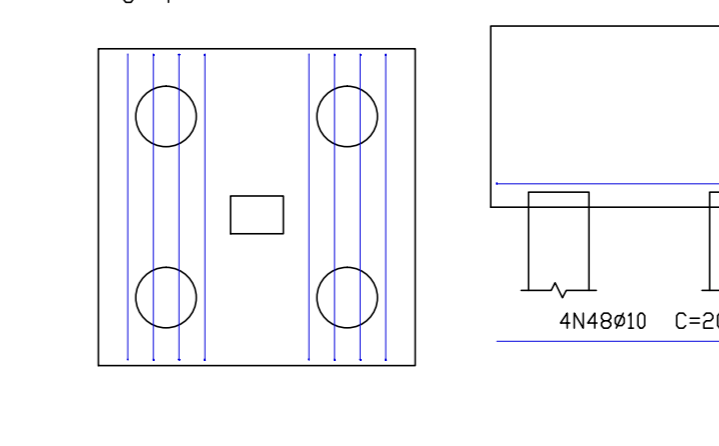
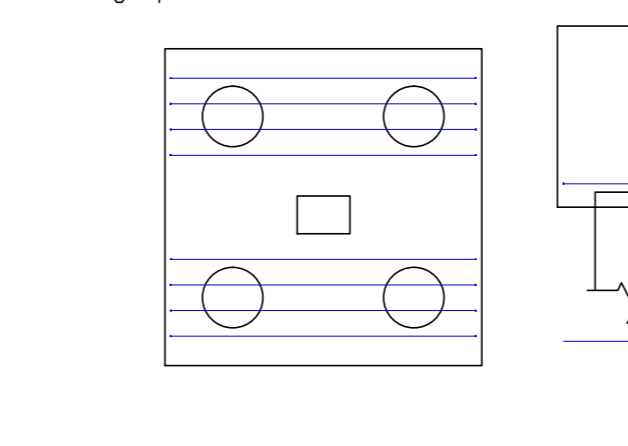
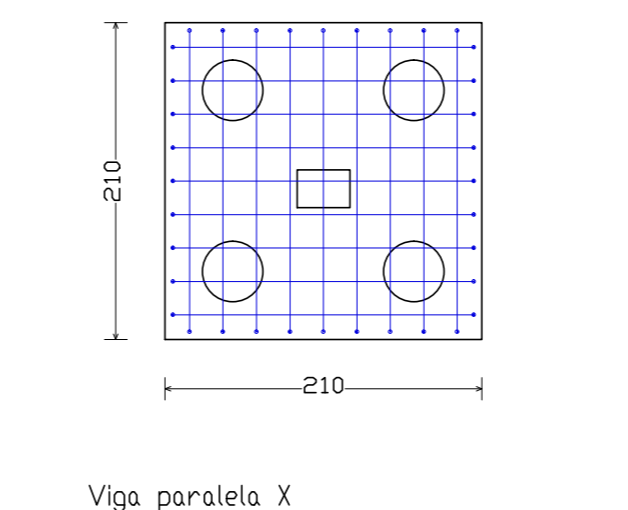
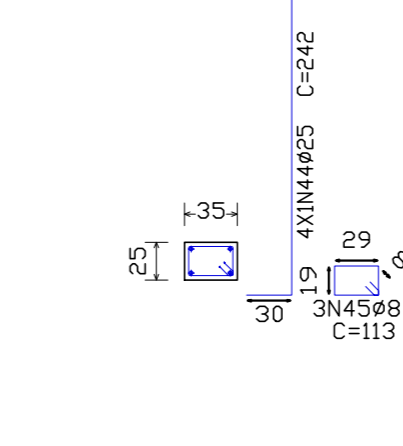
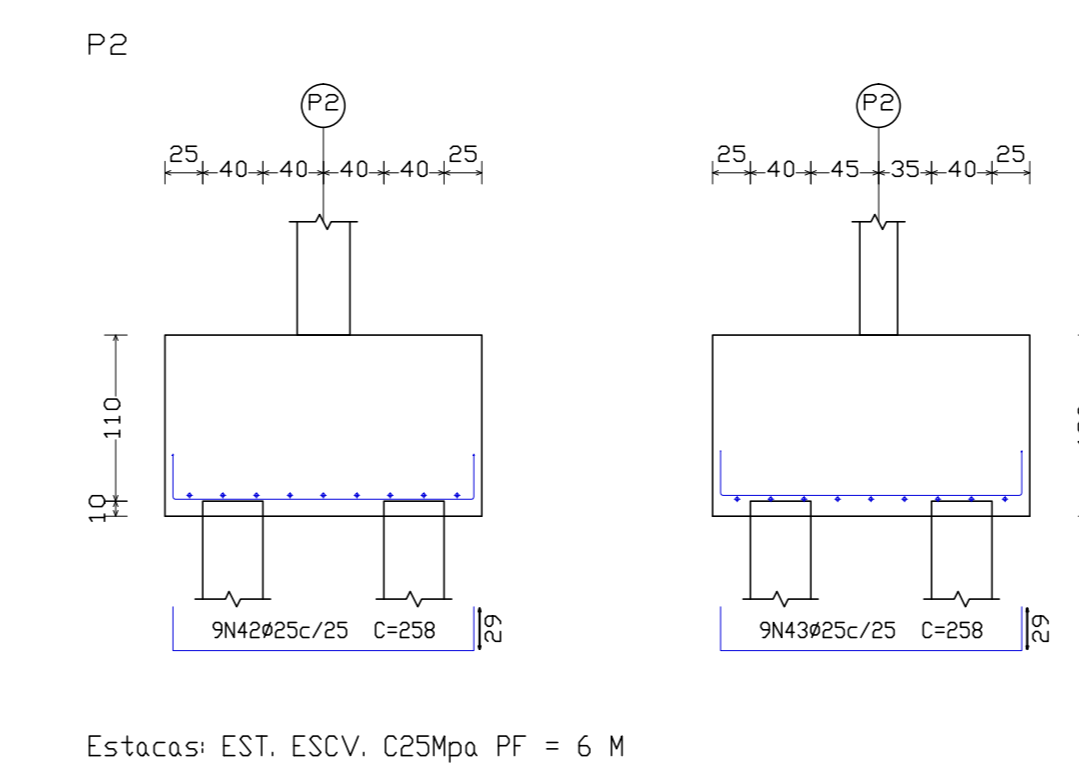
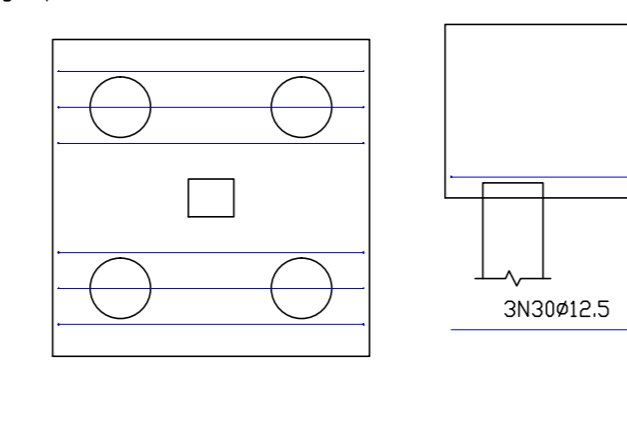
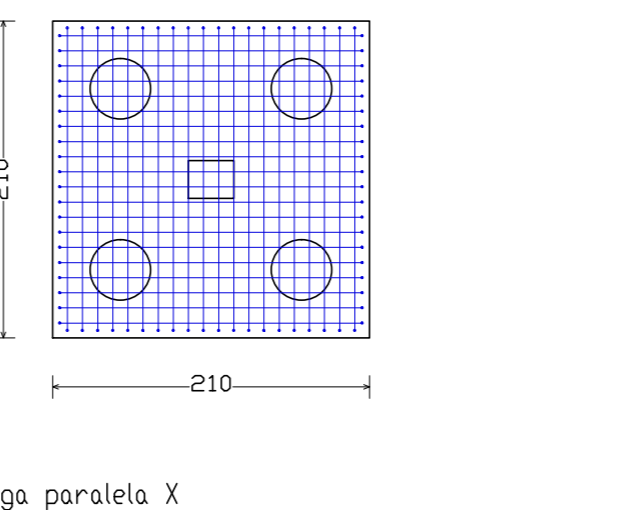
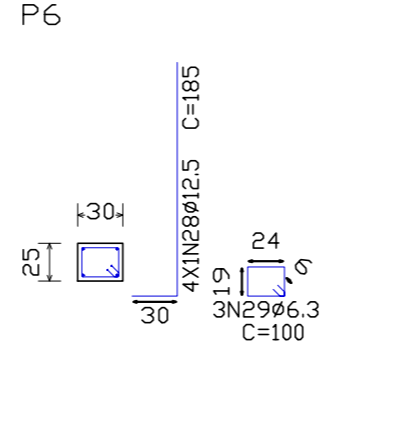
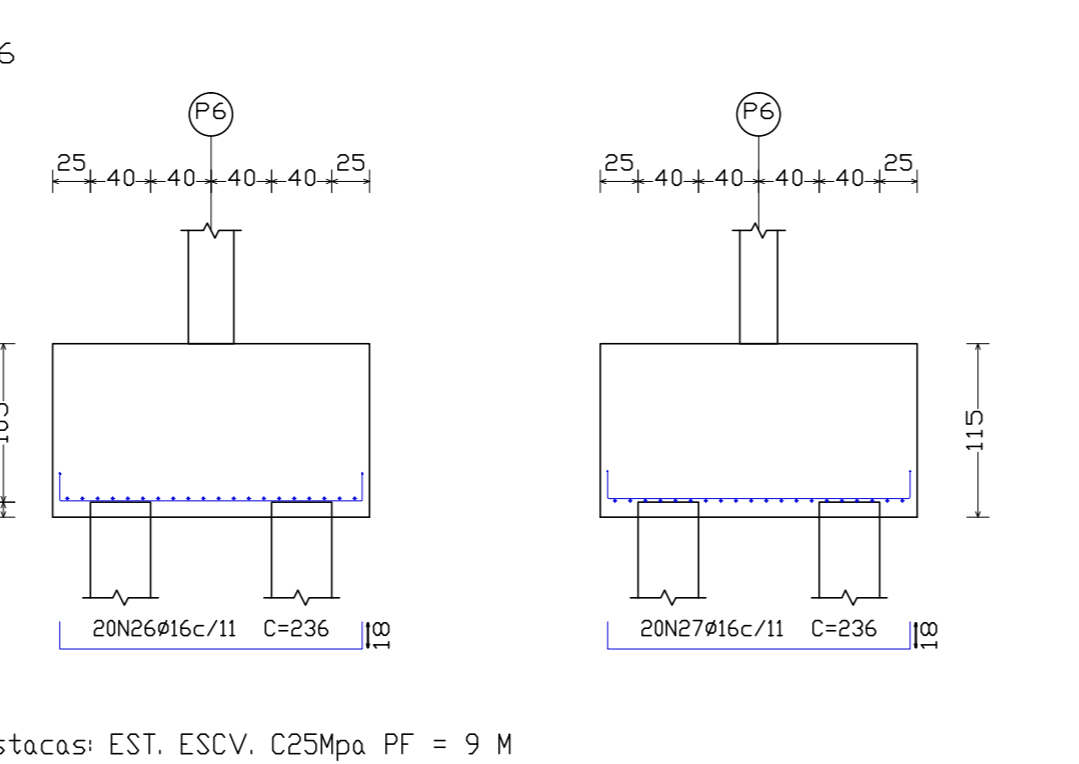
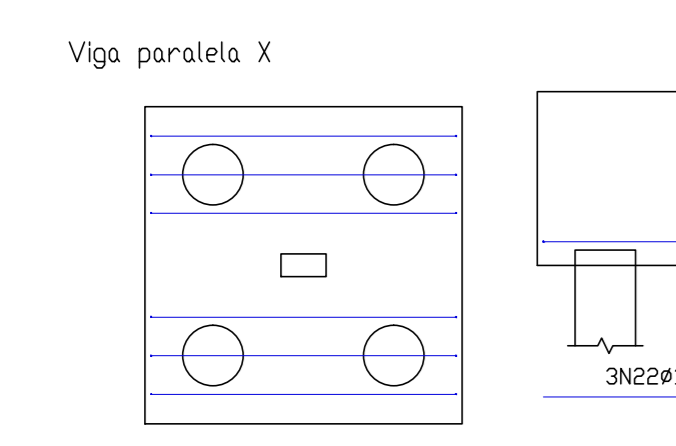
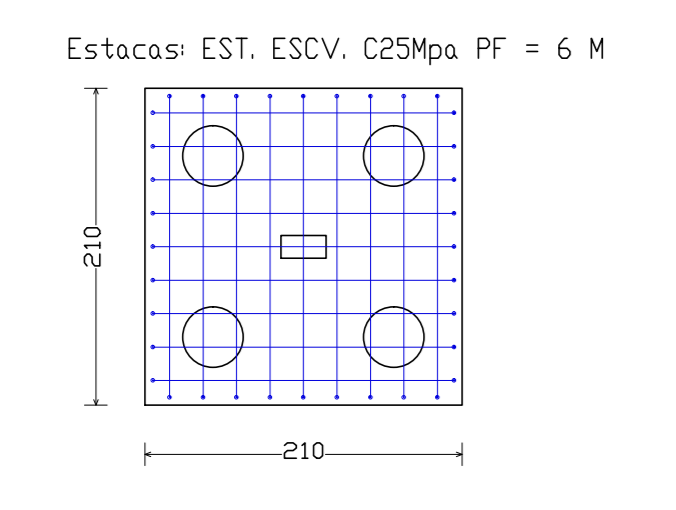
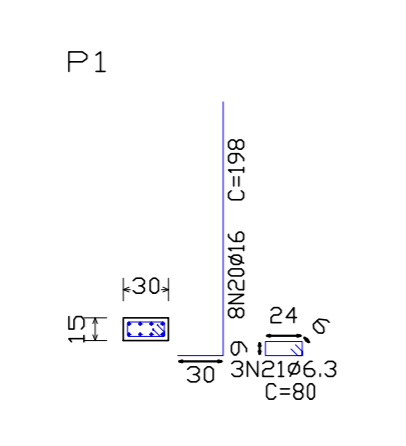
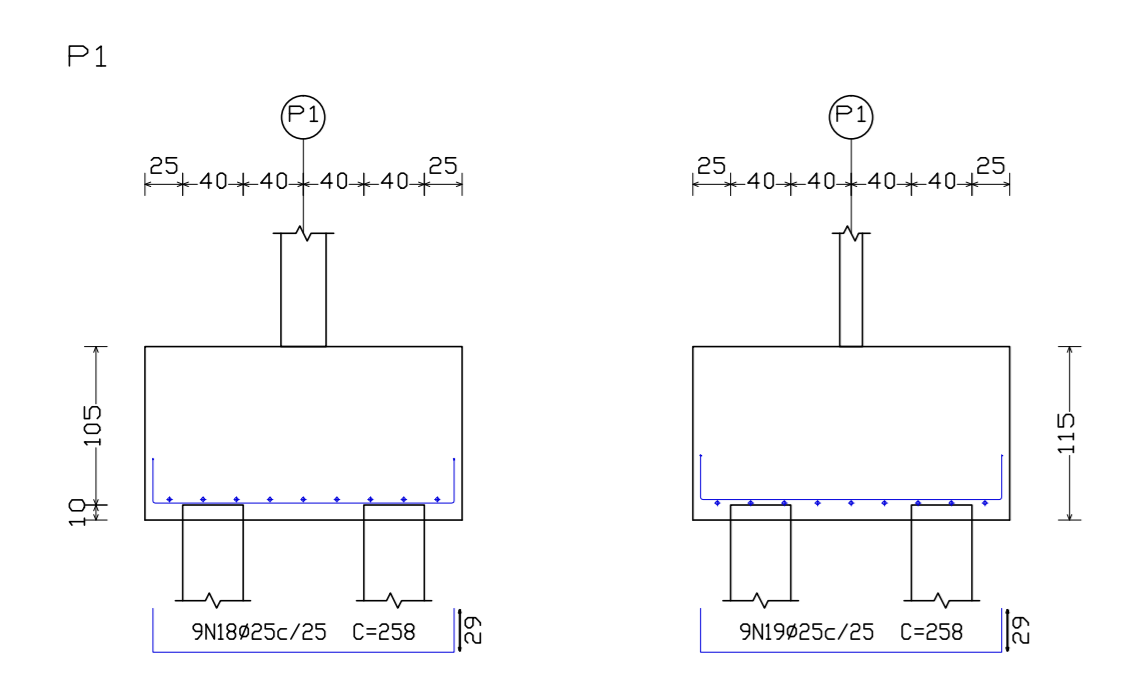
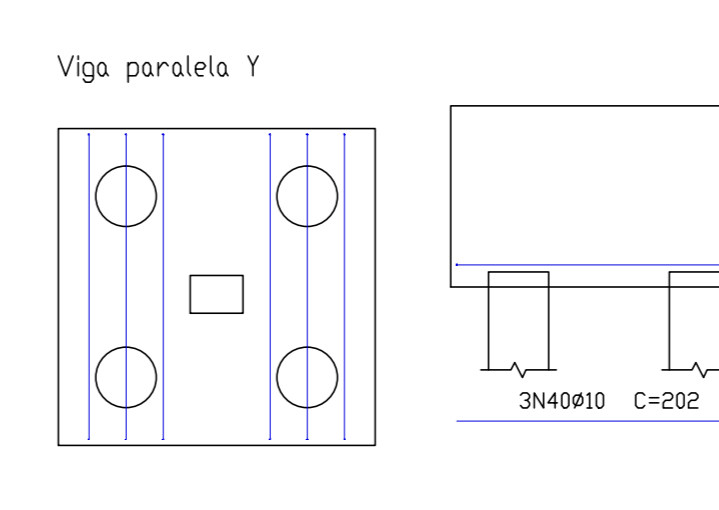
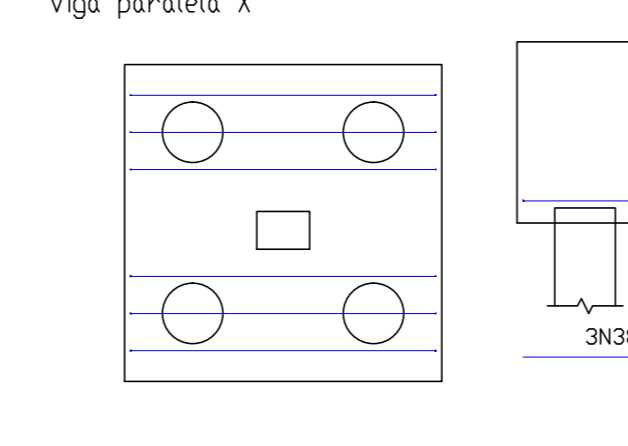
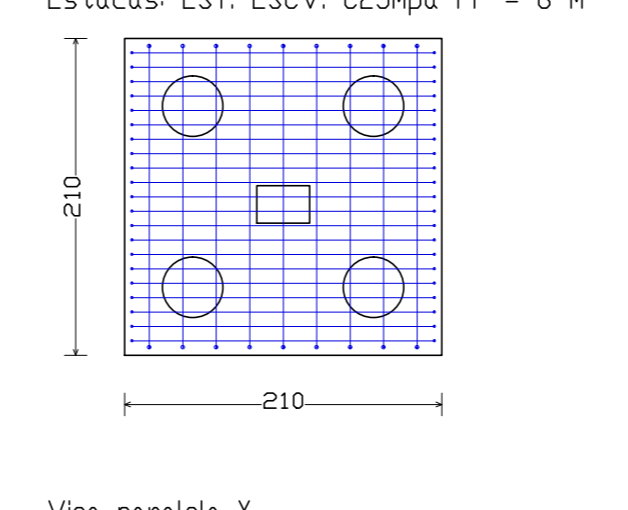
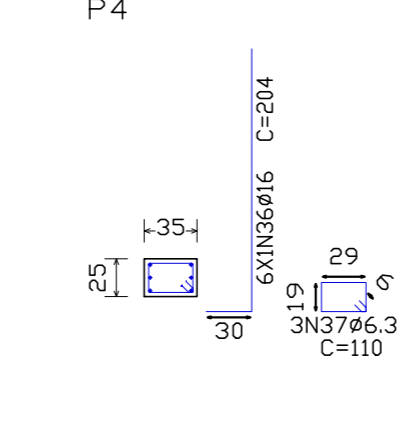
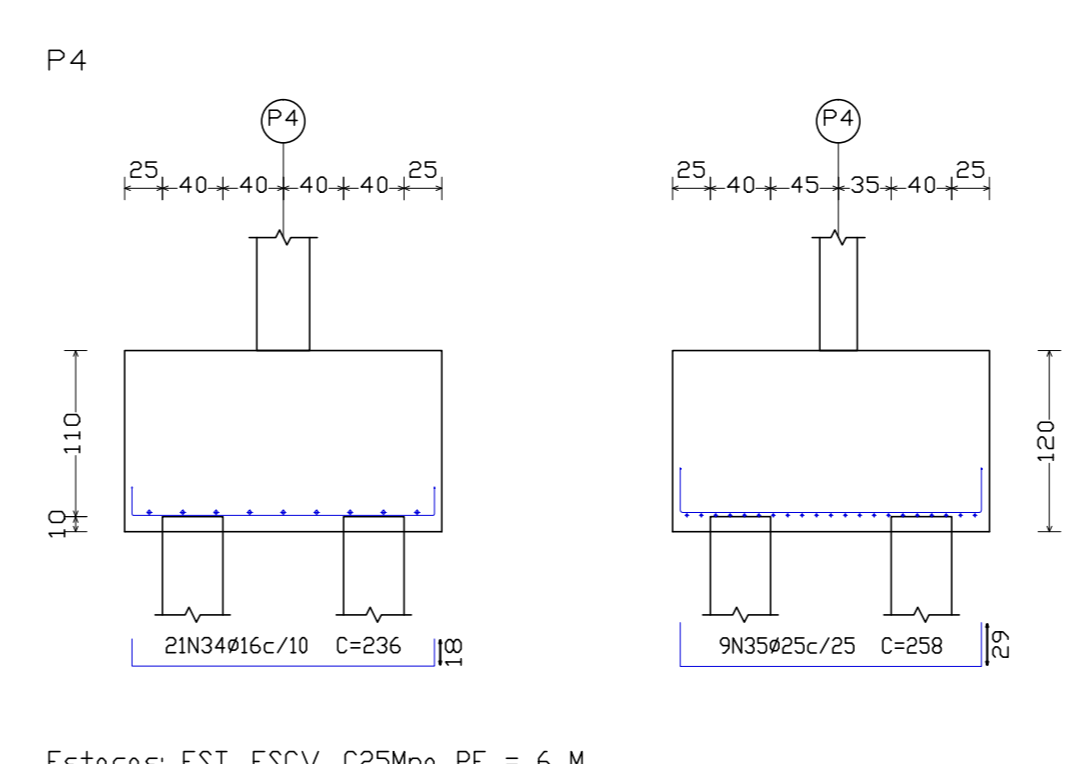
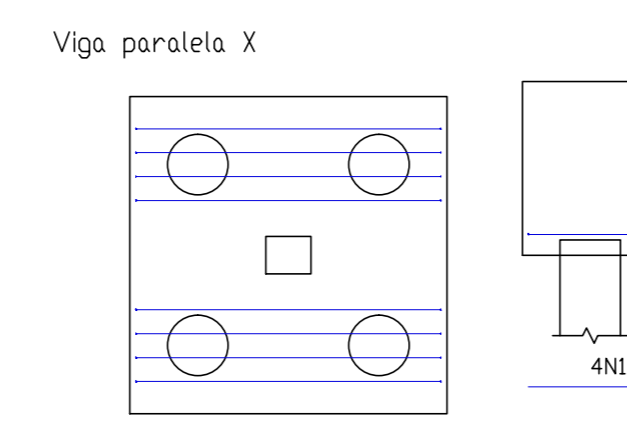
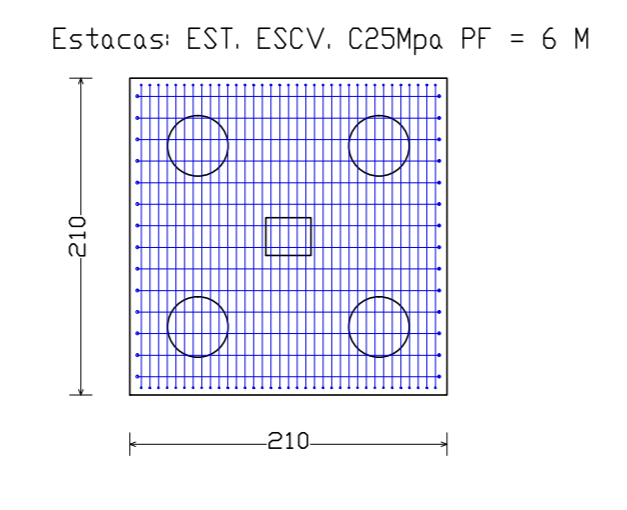
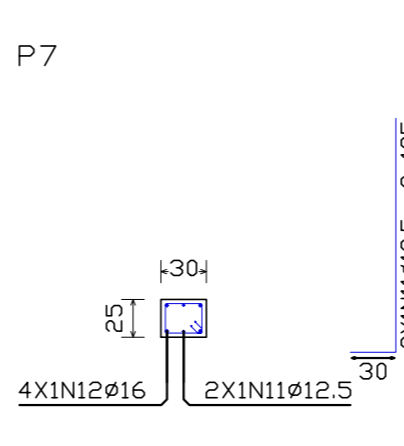
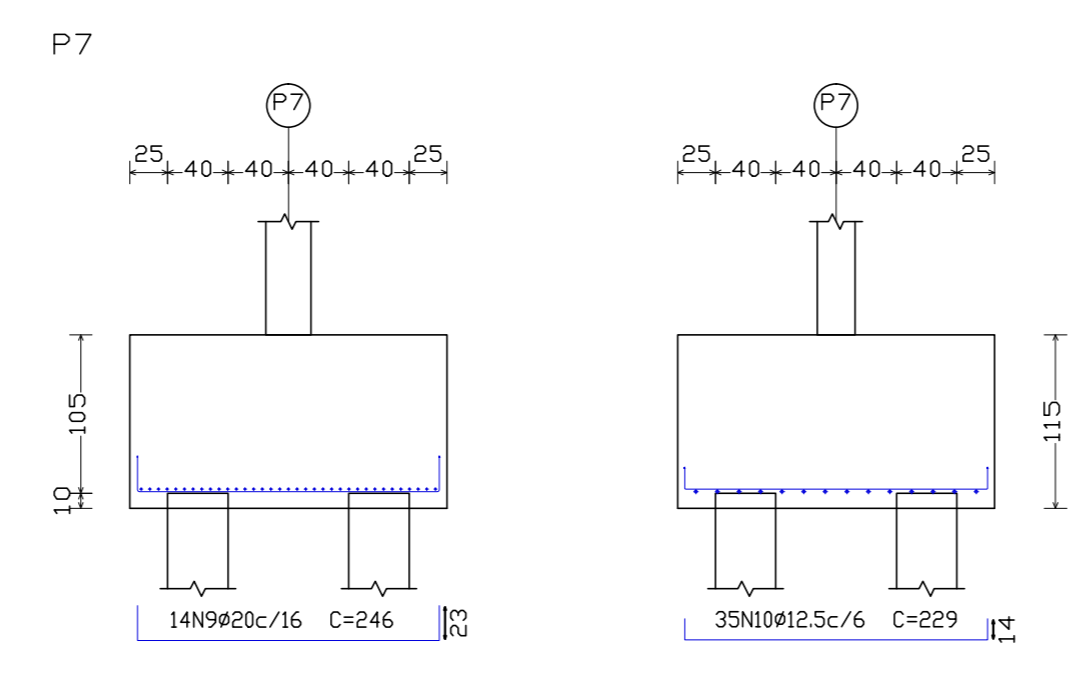
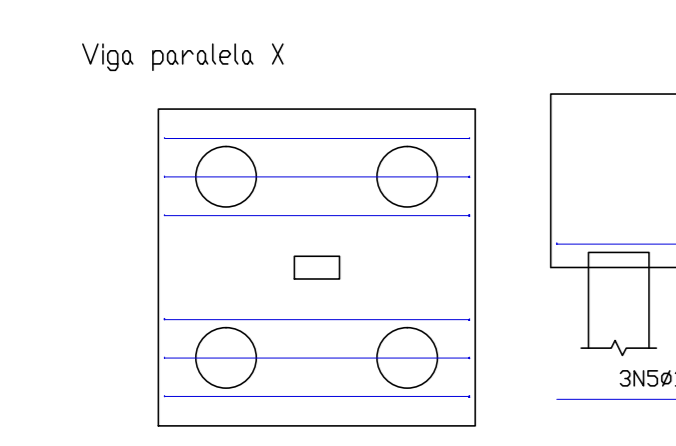
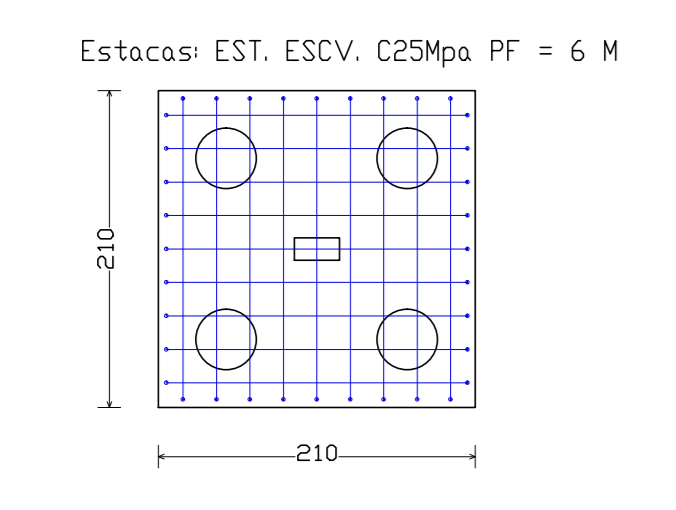
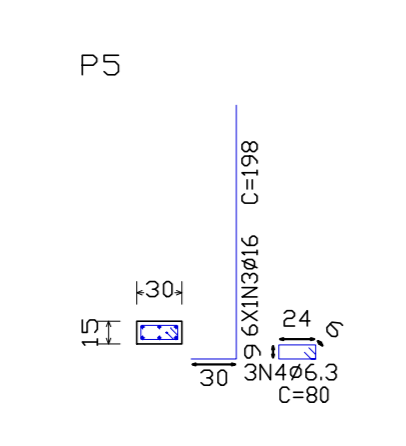
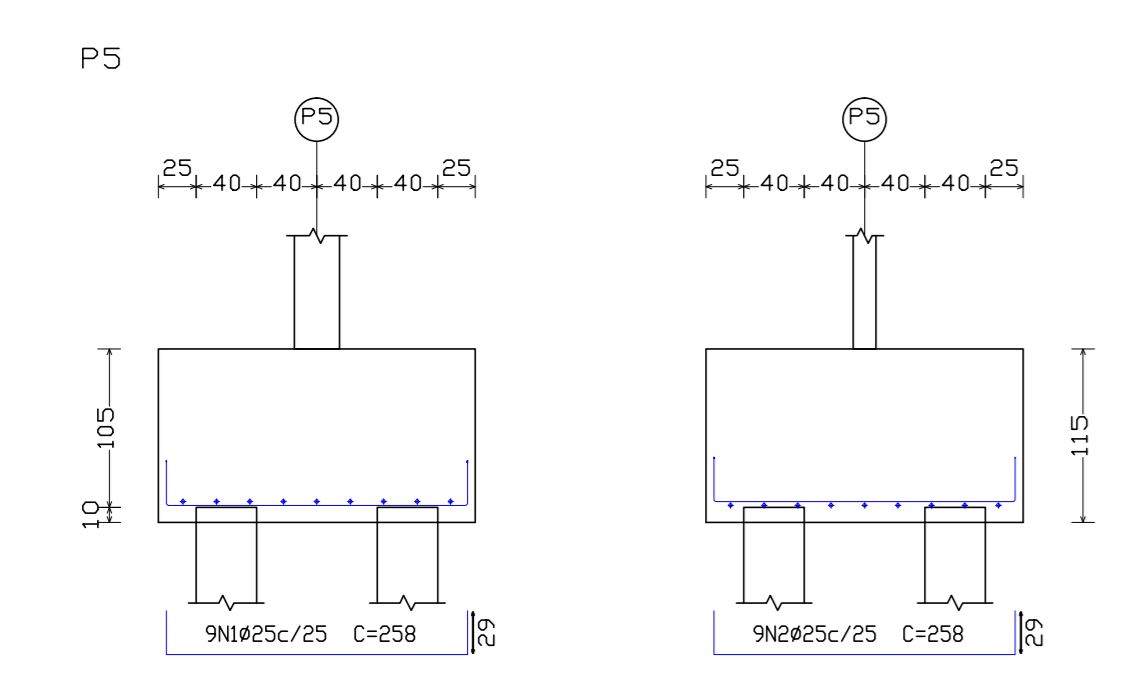
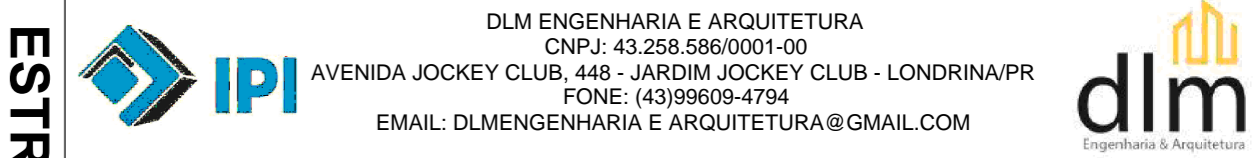


Elemento	Pos	Diam	Q	Do	Ret	Do	Comp	Total	CA-50	CA-60	
		(cm)	(cm)	(cm)	(cm)	(cm)	(cm)	(kg)	(kg)	(kg)	
P5	1	ø25	9	29	200	29	298	232	89,5		
	2	ø25	9	29	200	29	298	232	89,5		
	3	ø16	6	30	168		198	118	18,8		
	4	ø6,3	3		80		80	24	0,6		
	5	ø10	3		202		202	606	3,7		
	6	ø10	3		202		202	606	3,7		
	7	ø10	3		202		202	606	3,7		
	8	ø10	3		202		202	606	3,7		
	Total=100,245										
P7	9	ø20	14	23	200	23	248	344	84,5		
	10	ø12,5	3	14	201	14	209	801	7,2		
	11	ø12,5	3	15	155		165	370	3,6		
	12	ø16	4	30	170		200	800	12,6		
	13	ø6,3	3		100		100	28	0,7		
	14	ø10	4		202		202	808	5,0		
	15	ø10	4		202		202	808	5,0		
	16	ø10	4		202		202	808	5,0		
	17	ø10	4		202		202	808	5,0		
Total=100,245											
P1	18	ø25	9	29	200	29	298	232	89,5		
	19	ø25	9	29	200	29	298	232	89,5		
	20	ø16	6	30	168		198	118	18,8		
	21	ø6,3	3		80		80	24	0,6		
	22	ø10	3		202		202	606	3,7		
	23	ø10	3		202		202	606	3,7		
	24	ø10	3		202		202	606	3,7		
	25	ø10	3		202		202	606	3,7		
	Total=100,243										
P6	26	ø16	20	18	200	18	236	472	74,5		
	27	ø16	20	18	200	18	236	472	74,5		
	28	ø12,5	4	30	155		185	740	7,1		
	29	ø6,3	3		100		100	300	0,7		
	30	ø12,5	3		202		202	606	5,8		
	31	ø12,5	3		202		202	606	5,8		
	32	ø12,5	3		202		202	606	5,8		
	33	ø12,5	3		202		202	606	5,8		
	Total=100,243										
P4	34	ø16	21	18	200	18	236	472	78,2		
	35	ø25	9	29	200	29	298	232	89,5		
	36	ø16	6	30	174		204	121	15,3		
	37	ø6,3	3		110		110	330	0,8		
	38	ø10	3		202		202	606	3,7		
	39	ø10	3		202		202	606	3,7		
	40	ø10	3		202		202	606	3,7		
	41	ø10	3		202		202	606	3,7		
	Total=100,229										
P2	42	ø25	9	29	200	29	298	232	89,5		
	43	ø25	9	29	200	29	298	232	89,5		
	44	ø25	4	30	212		242	96	3,2		
	45	ø8	3		113		113	339	1,3		
	46	ø10	4		202		202	808	5,0		
	47	ø10	4		202		202	808	5,0		
	48	ø10	4		202		202	808	5,0		
	49	ø10	4		202		202	808	5,0		
	Total=100,214										
									ø6,3	3,8	0,0
									ø8	1,5	0,0
									ø10	92,8	0,0
									ø12,5	22,2	0,0
									ø16	532,2	0,0
									ø20	93,4	0,0
									ø25	73,1	0,0
									Total	977,0	0,0

Resumo Aço	Comp. total	Peso=10%	Total
Subtotal	(m)	(kg)	
CA-50	66,3	118,8	32
ø8	312,5	136	
ø10	1235,1	837	
ø12,5	2969,7	3146	
ø16	2257,5	3920	
ø20	217,6	590	
ø25	172,2	730	9391
CA-60	64,2	17,8	2
Total			9393





DLM ENGENHARIA E ARQUITETURA  
 CRIE: 43.258.000/0001-00  
 AVENIDA JOCKEY CLUB, 448 - JARDIM JOCKEY CLUB - LONDRINA/PR  
 FONE: (43)3995-8794  
 EMAIL: DLMENGENHARIA E ARQUITETURA@GMAIL.COM

CIDADE: ITAJAI / SANTA CATARINA  
 OBRA: INSTITUTO DE PREVIDÊNCIA DE ITAJAI - IPI / SC  
 ENDEREÇO: Rua Anna Carolina Zappaloni Gomes Silva de Souza, 55  
 CIDADE: Itajai / SC BARRIO: Ressacada FONE: (43)3255-8600 DATA: Outubro / 2023  
 PRANCHAS:

LARISSA MEIRELES ARQUITETA E URBANISTA  
 CAU: A263386-8

INSTITUTO DE PREVIDÊNCIA DE ITAJAI

07/07

DESENHO: LARISSA MEIRELES ESCALA: 1/50