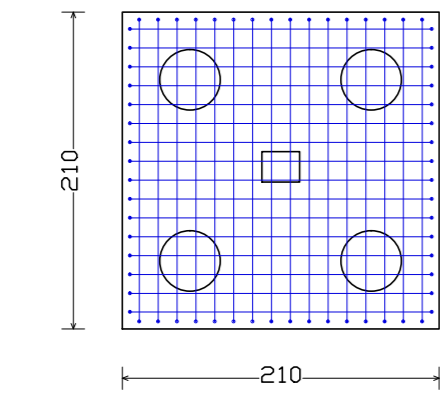
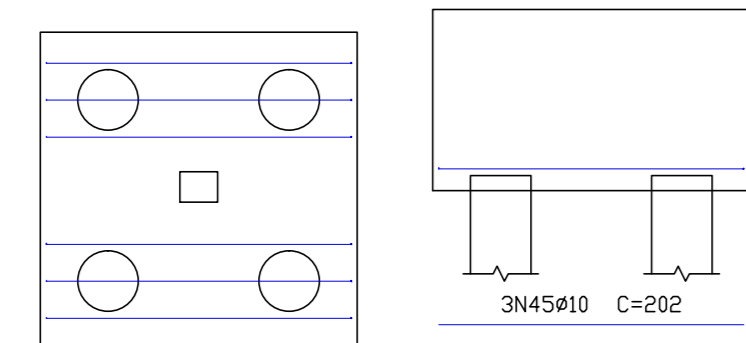


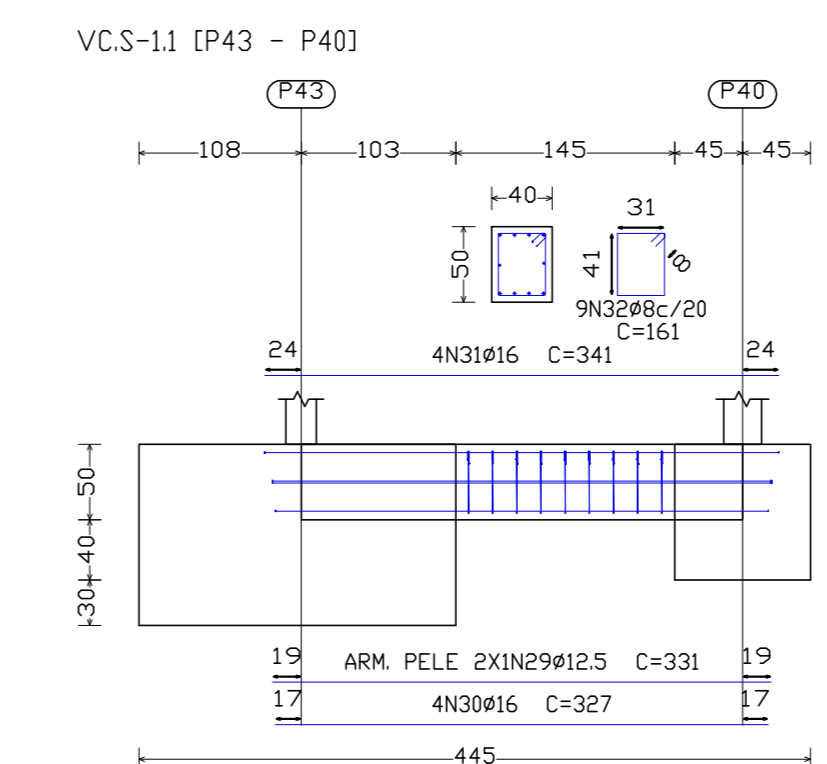
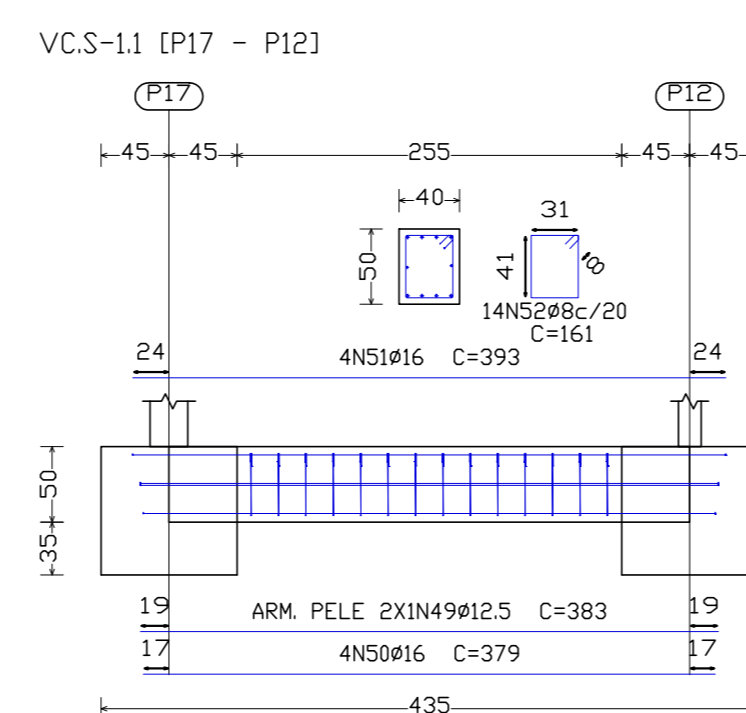
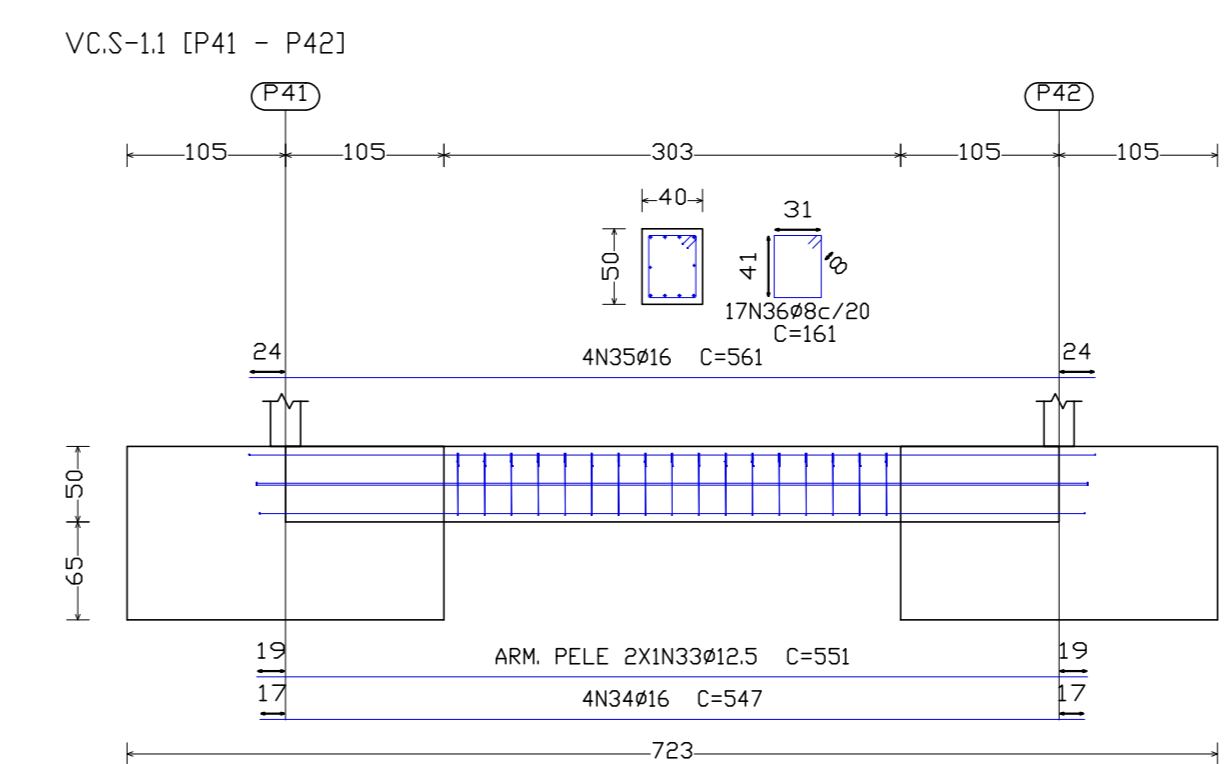
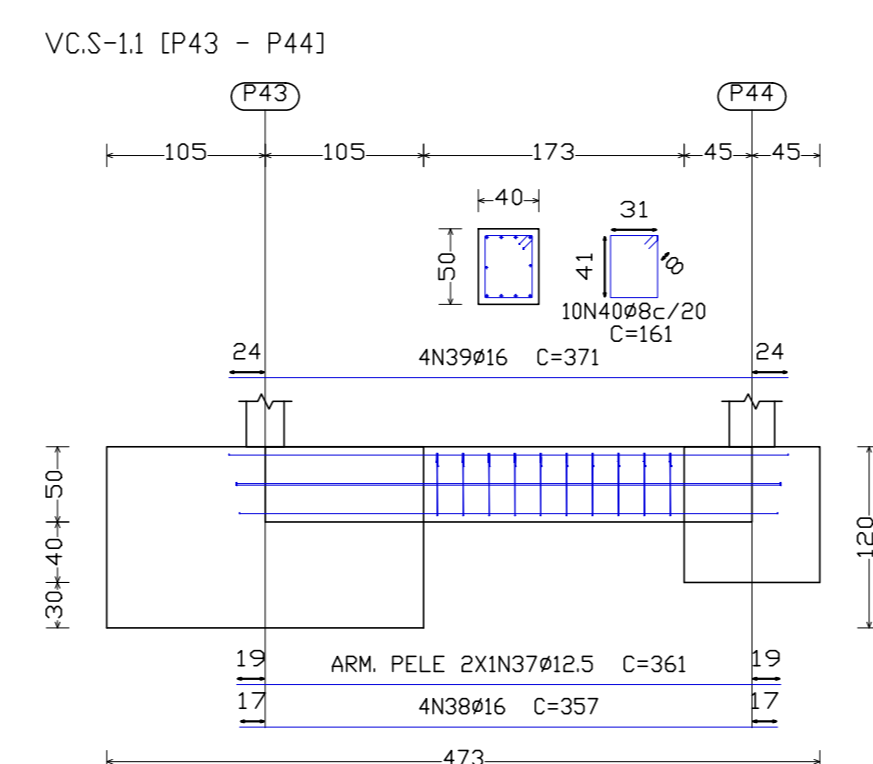
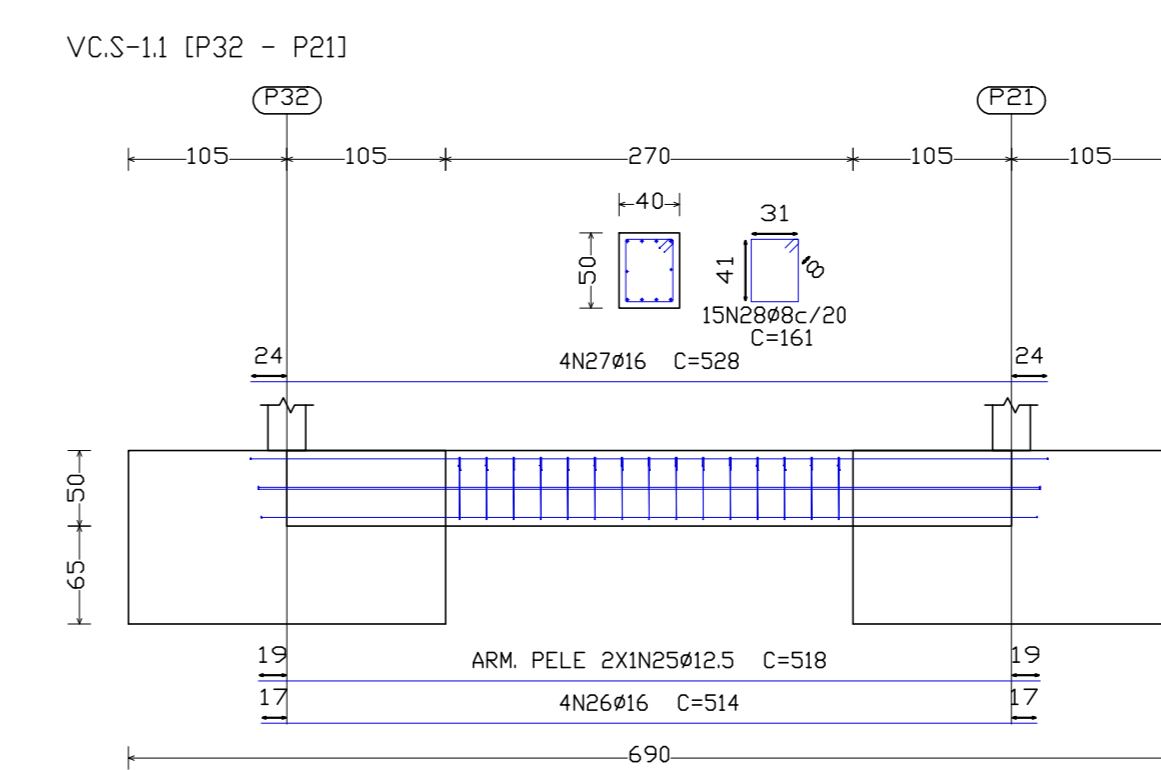
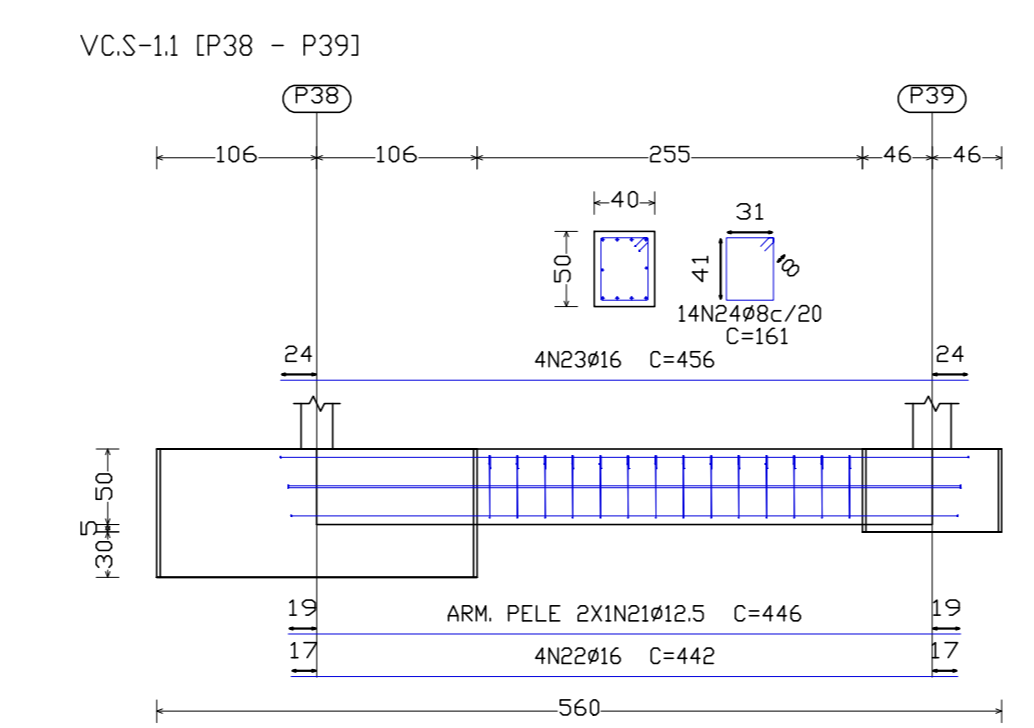
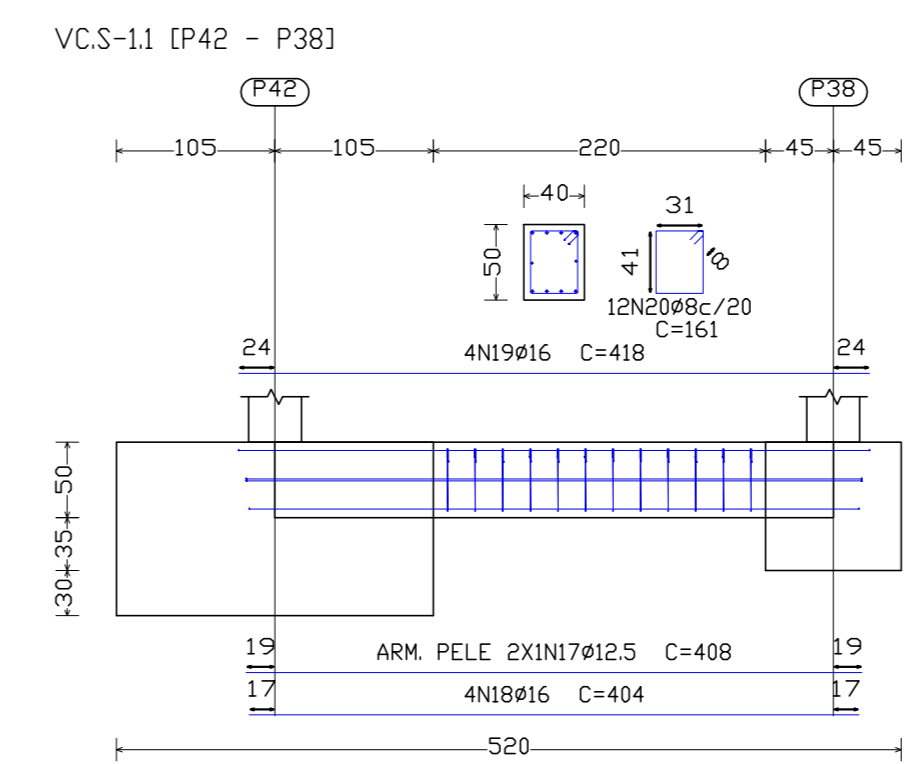
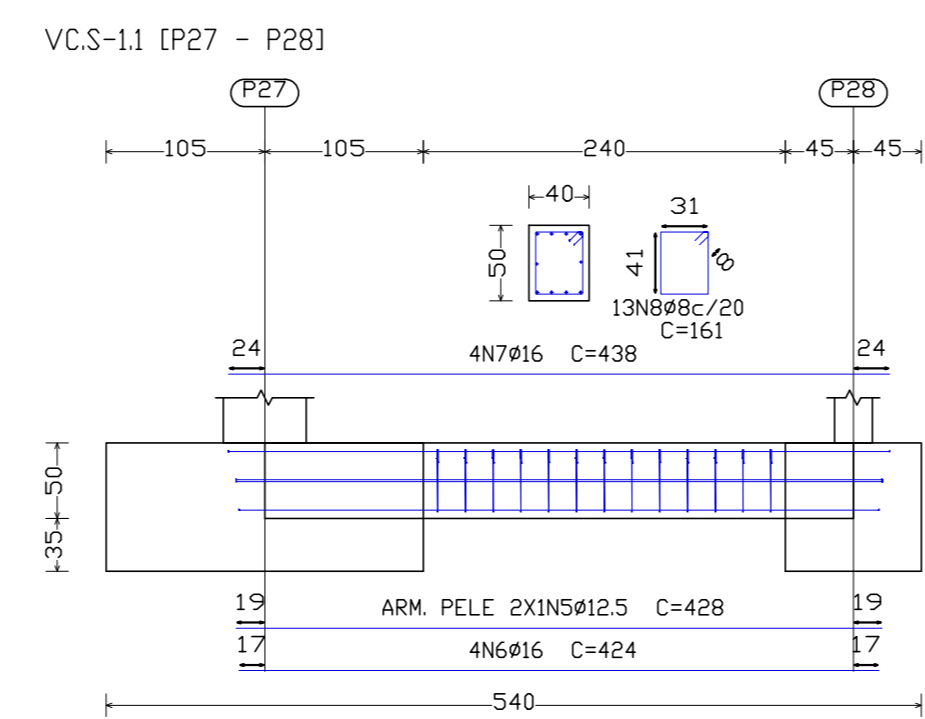
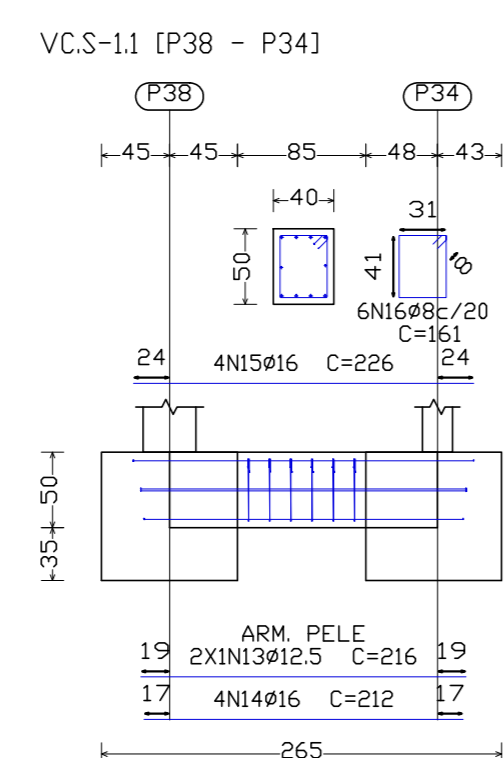
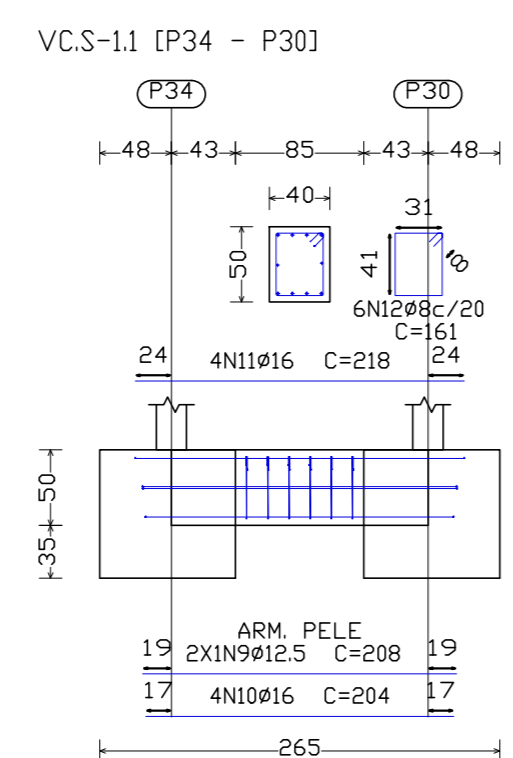
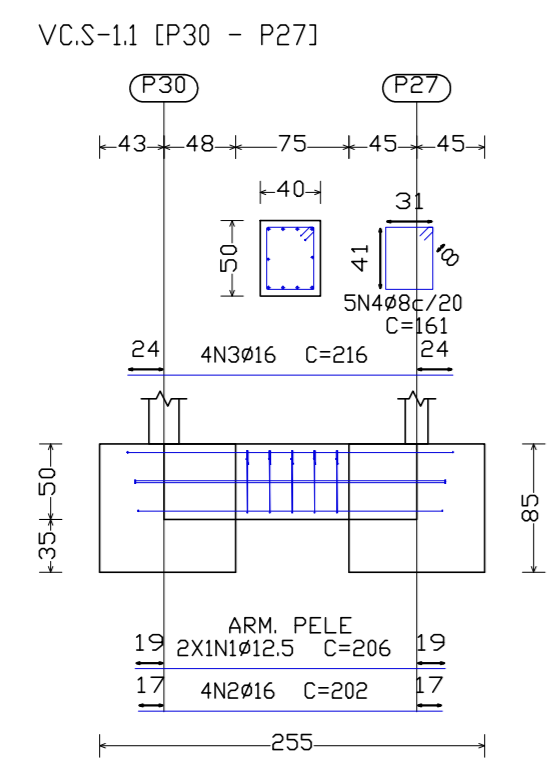
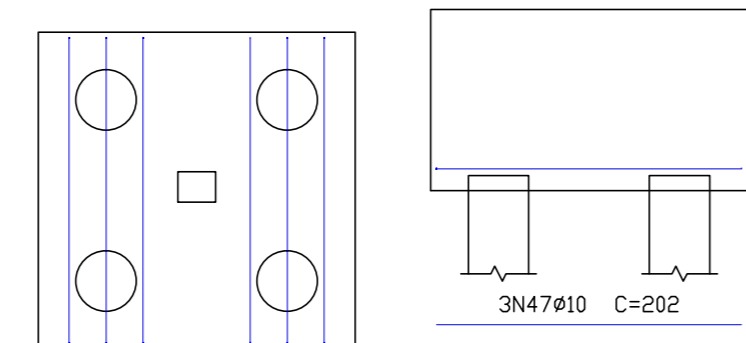
Estacas EST. ESCV. C25Mpa PF = 6 M



Viga paralela X



Viga paralela Y



Elemento	Pos	Diam	Do	Re	Do	Comp	Vol	CA-50	CA-60
		(cm)	(cm)	(cm)	(cm)	(cm)	(cm)	(kg)	(kg)
VCS-11 [P38 - P27]	1	Ø12.5	2	236	236	4.8			
	2	Ø16	4	202	202	808	12.8		
	3	Ø16	4	216	216	864	13.4		
	4	Ø8	2	161	161	805	3.2		
									Totais: 20.4
VCS-11 [P27 - P28]	5	Ø12.5	2	428	428	8.2			
	6	Ø16	4	424	424	1696	26.8		
	7	Ø16	4	438	438	1752	27.7		
8	Ø8	2	161	161	2993	8.3			
									Totais: 78.1
VCS-11 [P34 - P30]	9	Ø12.5	2	208	208	416	4.0		
	10	Ø16	4	204	204	816	12.9		
	11	Ø16	4	218	218	872	13.8		
12	Ø8	2	161	161	806	3.8			
									Totais: 38.0
VCS-11 [P38 - P34]	13	Ø12.5	2	216	216	432	4.2		
	14	Ø16	4	212	212	848	13.4		
	15	Ø16	4	226	226	904	14.3		
	16	Ø8	2	161	161	806	3.8		
									Totais: 39.3
VCS-11 [P42 - P38]	17	Ø12.5	2	408	408	816	7.9		
	18	Ø16	4	404	404	1616	25.3		
	19	Ø16	4	418	418	1672	26.4		
	20	Ø8	2	161	161	1932	7.4		
									Totais: 74.1
VCS-11 [P38 - P39]	21	Ø12.5	2	446	446	892	8.6		
	22	Ø16	4	442	442	1768	27.9		
	23	Ø16	4	456	456	1824	28.8		
	24	Ø8	2	161	161	2254	8.9		
									Totais: 80.8
VCS-11 [P32 - P21]	25	Ø12.5	2	518	518	1036	10.0		
	26	Ø16	4	514	514	2056	32.5		
	27	Ø16	4	528	528	2112	33.2		
	28	Ø8	2	161	161	2415	9.5		
									Totais: 99.8
VCS-11 [P43 - P44]	29	Ø12.5	2	331	331	662	6.4		
	30	Ø16	4	327	327	1308	20.6		
	31	Ø16	4	341	341	1364	21.3		
	32	Ø8	2	161	161	1449	5.7		
									Totais: 59.6
VCS-11 [P41 - P42]	33	Ø12.5	2	551	551	1102	10.6		
	34	Ø16	4	547	547	2188	34.5		
	35	Ø16	4	561	561	2244	35.4		
	36	Ø8	2	161	161	2737	10.8		
									Totais: 102.0
VCS-11 [P43 - P44]	37	Ø12.5	2	361	361	722	7.0		
	38	Ø16	4	357	357	1428	22.5		
	39	Ø16	4	371	371	1484	23.4		
	40	Ø8	2	161	161	1610	6.4		
									Totais: 102.0
P43	41	Ø20	16	23	23	246	3936	97.1	
	42	Ø20	16	23	23	246	3936	97.1	
	43	Ø12.5	4	30	30	189	736	7.3	
	44	Ø6.3	3	80	80	240	0.6		
	45	Ø10	3	202	202	606	3.7		
	46	Ø10	3	202	202	606	3.7		
	47	Ø10	3	202	202	606	3.7		
	48	Ø10	3	202	202	606	3.7		
									Totais: 238.6
VCS-11 [P17 - P12]	49	Ø12.5	2	383	383	766	7.4		
	50	Ø16	4	379	379	1516	23.9		
	51	Ø16	4	393	393	1572	24.8		
	52	Ø8	2	161	161	2254	8.9		
									Totais: 71.3
									Ø6.3 0.6 0.0
									Ø8 84.4 0.0
									Ø10 16.3 0.0
									Ø12.5 94.2 0.0
									Ø16 166.8 0.0
									Ø20 213.6 0.0
									Total 777.2 0.0

Resumo Aço	Comp. total	Peso+10%	Total
Subsola	(m)	(kg)	
CA-50	Ø6.3	118.8	32
Detalhamento Fundação	Ø8	312.5	136
	Ø10	1235.1	837
	Ø12.5	2969.7	3146
	Ø16	2257.5	3920
	Ø20	217.6	590
	Ø25	172.2	730
CA-60	Ø4.2	17.8	2
Total			9393

ESTRUTURAL
DETALHAMENTO FUNDAÇÃO

DLM ENGENHARIA E ARQUITETURA
CNPJ: 43.268.860/0001-00
AVENIDA JOCKEY CLUB, 448 - JARDIM JOCKEY CLUB - LONDRINA/PR
EMAIL: DLMENGENHARIA E ARQUITETURA@GMAIL.COM

CIDADE: ITAJAI / SANTA CATARINA

OBRA: INSTITUTO DE PREVIDÊNCIA DE ITAJAI - IPI / SC

ENDEREÇO: Rua Anna Carolina Zapparoni Gomes Silva de Souza, 55

CIDADE: Itajai / SC

BARRO: Ressacada

DATA: Outubro / 2023

FONE: (43)3255-8600

FRANQUIA Nº:

LARISSA MEIRELES ARQUITETA E URBANISTA
CAU: A283386-8

INSTITUTO DE PREVIDÊNCIA DE ITAJAI

04/07

DESENHO: LARISSA MEIRELES

ESCALA: 1/50